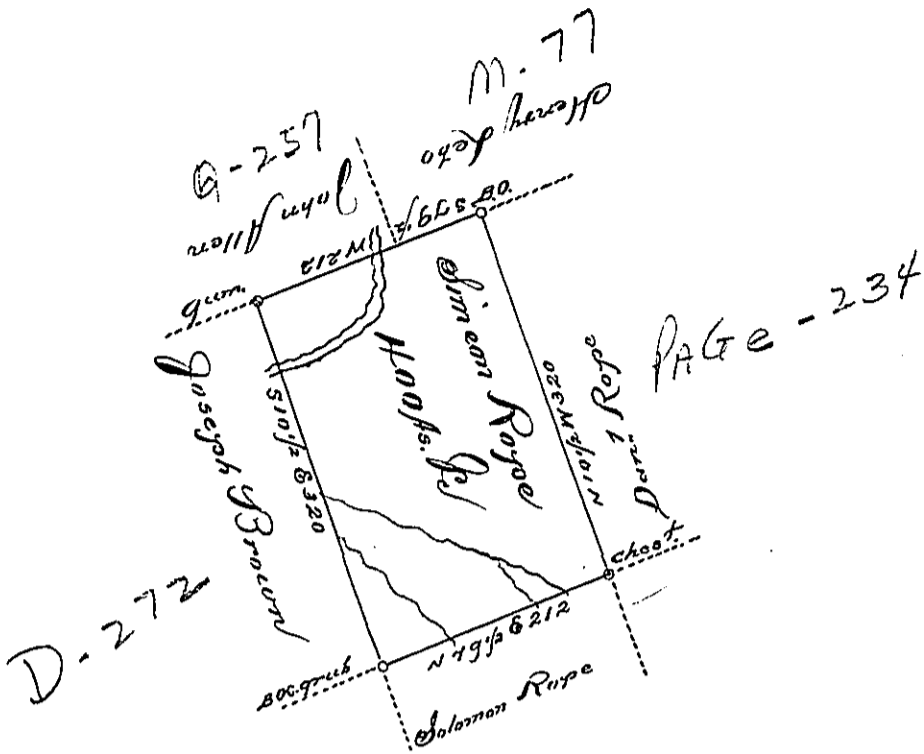


Hazle
Luzerne



A Draft of a tract of Land Called Situate on the waters of Cutawissipp
 Creek in the County of Northampton Containing Four Hundred acres & Allorred,
 Surveyed for Simeon Royce the 4th day of October 1793. by virtue of a war-
 rant dated the 13th day of June 1793.

by Wm Gray D. J.

To Daniel Brinthead Esq^r.
 Survt. Gen^l.



IN TESTIMONY that the above is a copy of the original remaining on file in the
 Department of Internal Affairs of Pennsylvania, made con-
 formably to an Act of Assembly approved the 16th day of
 February, 1833, I have hereunto set my Hand and caused
 the Seal of said Department to be affixed at Harrisburg, this

 sixth day of August, 1895,

 James W. Latta
 Secretary of Internal Affairs.